



IP65 Batten
TEMPEST V PRO

Tempest V Pro is an upgrade to our current Tempest V range. The whole product ranges efficacy will be improved up to 135Lm/W, with an addition of flicker free.

The entire range is an ideal choice for outdoor applications such as car parks, loading docks, and other commercial and industrial settings.

It is also suitable for indoor environments that may be exposed to moisture or humidity.

Tempest V Pro will share the same structure design as our Tempest V weather-proof batten which provides all the installation convenience such as side and back entry and large terminal blocks.

Features

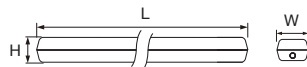
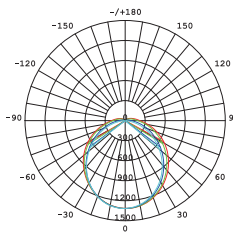
- Five-Colour
- Multi-Watt
- Opal polycarbonate diffuser
- Large 6mm terminal block
- Sustained Emergency module, AS2293 Compliant

Applications

Offices, Garages, Stations, Industrial, Car Parks

Warranty

3 years



Product Data

Order Code	Wattage	CCT	Lumen Output	Beam Angle	Size (LxWxH)mm	Weight (kg)
211021HDEMS	20/14/10W	3K / 4K / 5K / 5.7K / 6.5K	1350 - 2700Lm*	120°	655x115x85	1.28
211022HDEMS	40/36/30/26/24/20/14/10W	3K / 4K / 5K / 5.7K / 6.5K	1350 - 5400Lm*	120°	1255x115x85	2.15

[1] Operating temperature: 0°C~+50°C

[2] Voltage: 220-240V

[3] PF: 0.9

[4] *@3K = 125Lm/W

[5] *@≥4K = 135Lm/W

Luminaire Classifications	Maximum Spacings (M)															
	Mounting Height (M)															
	2.1	2.4	2.7	3	3.3	3.6	4	4.5	5	6	7	8	9	10	15	
Co-C180 D63	18.0	18.7	19.4	20.1	20.7	21.2	21.8	22.5	23.2	24.2	24.9	25.4	25.7	25.9	23.7	
C90-C270 D32	16.7	17.4	18.0	18.6	19.1	19.6	20.1	20.8	21.3	22.1	22.7	23.0	23.1	23.1	19.4	

Order Code (Battery)	Battery Capacity	Battery Voltage	Charging Time	Discharging Time	Battery Type
423089	2000 mAh at 0.2 CmA	6.4V	7H	2H	LiFePO4

Accessories

Item	Order Code
Remote Control	213979

Specifications are for reference only and may be changed without prior notice.